



MATERIALS

Bernat® Softee® Baby Chunky™ (5 oz/140 g; 155 yds/142 m)

Main Color (MC) Cozy Gray (96005) **4 balls**

Contrast A Blue Lagoon (96011) **1 ball**

Size U.S. M/13 (9 mm) crochet hook **or size needed to obtain gauge.**

ABBREVIATIONS:

Approx =

Approximate(ly)

Beg = Begin(ning)

Ch = Chain(s)

Dc = Double crochet

Rep = Repeat

Rnd(s) = Round(s)

RS = Right side

Sc = Single crochet

Sl st = Slip stitch

St(s) = Stitch(es)

 CROCHET | SKILL LEVEL: EASY

MEASUREMENT

Approx 44" [112 cm] square.

GAUGE

8½ sc and 9 rows = 4" [10 cm].

INSTRUCTIONS

Blanket: With MC, ch 92.

1st row: (RS). 1 sc in 2nd ch from hook. 1 sc in each ch to end of chain. Turn. 91 sc.

2nd row: Ch 1. 1 sc each sc to end of row. Turn.

Rep last row until work from beg measures 43" [109 cm]. Fasten off.

Border: With RS facing, join A with sl st to top right corner of Blanket.

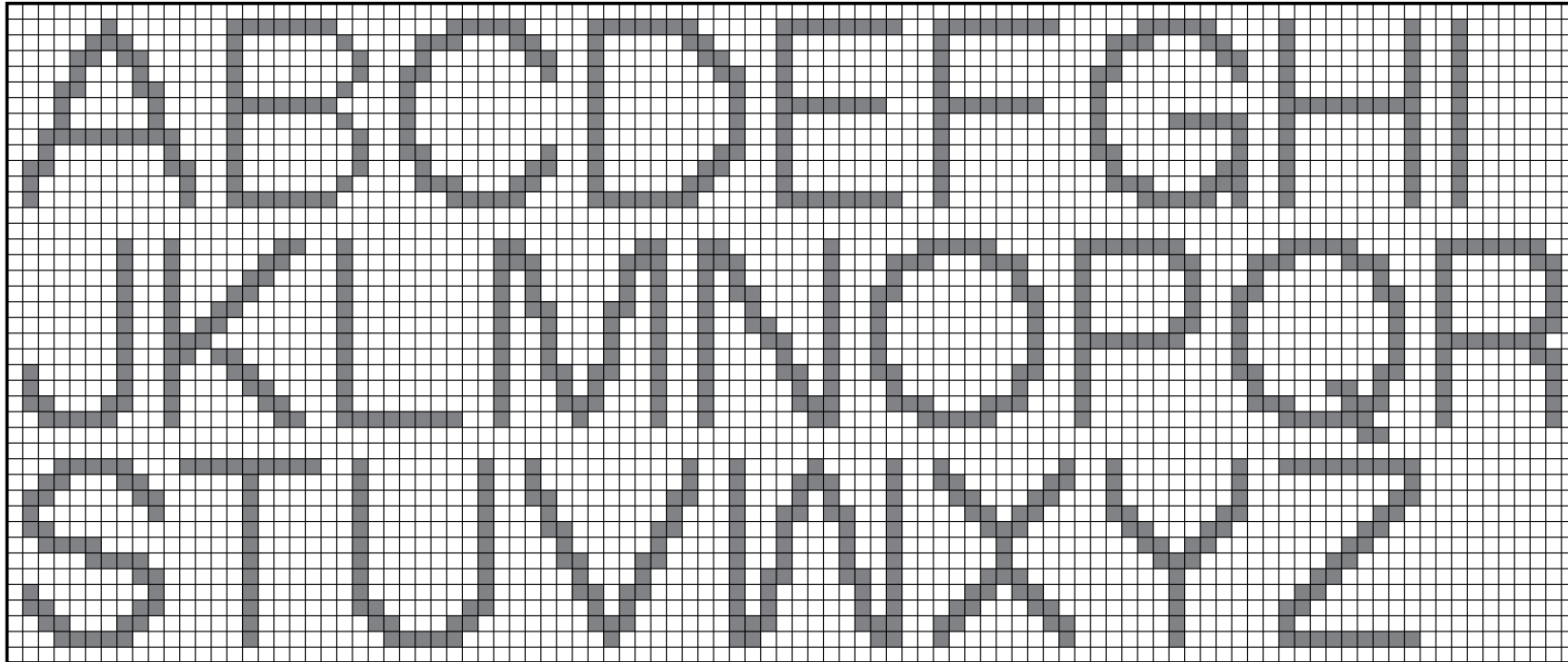
1st rnd: Ch 1. 3 sc in first sc. 1 sc in each sc to last sc. 3 sc in last sc. Work 89 sc evenly down left side edge

of Blanket to next corner. 3 sc in corner. Work 89 sc evenly across bottom edge of Blanket to next corner. 3 sc in next corner. Work 89 sc evenly across right side edge of Blanket. Join with sl st to first sc. 368 sts.

Next rnd: Ch 1. 1 sc in each sc around having 3 sc in each corner. Join with sl st to first sc.

Rep last rnd twice more. 392 sts. (95 sc each side plus 3 sc in each corner).

Next rnd: Sl st in each sc to last st before corner st. *7 dc in corner st. Skip next sc. Sl st in next sc. Skip next sc. 5 dc in next sc. Skip next sc. Sl st in next sc. (Skip next 2 sc. 5 dc in next sc. Skip next sc. Sl st in next sc) until 1 st before next corner st. Rep from * around. Join with sl st to first dc. Fasten off.



■ = 1 cross stitch

Monogram: With A, RS facing and following chart, cross stitch letter of choice to corner of Blanket as seen in picture (4 sts in from right side edge and 4 rows up from bottom edge). **Note:** Each square of chart represents 1 sc.

